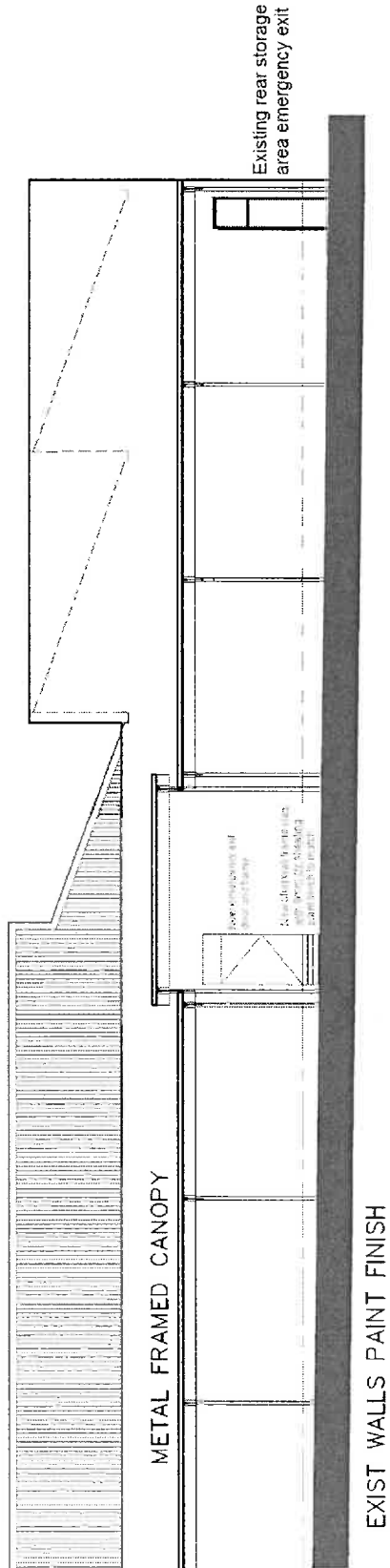
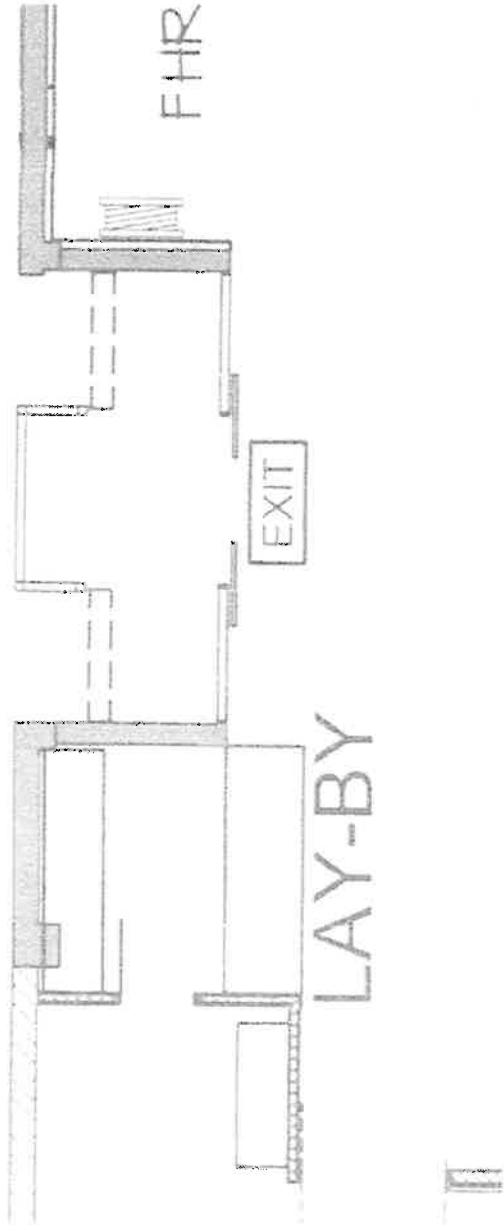


Existing Steere Street Exit

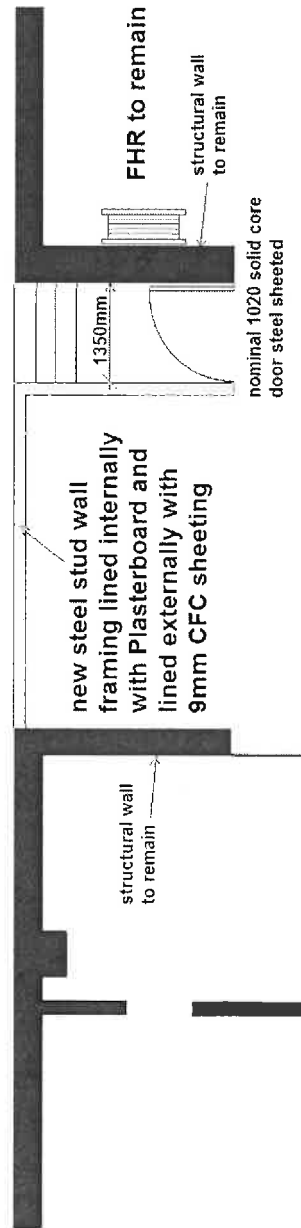


Proposed modified exit



- Specifications**
- remove existing auto sliding doors
 - remove existing floor tiles
 - remove existing glass blocks
 - infill stairs to left side of existing exit
 - build a new steel stud wall frame as noted on the plan
 - install gold batt insulation to wall frames
 - line wall frames internally with 10mm plasterboard
 - line externally with 9mm CFC sheeting
 - ceiling in this area to remain as is
 - install new door and frame to codes
 - install additional handrail to exit stairs
 - move exiting exit signage to above new door opening
 - paint finishes to match existing

Existing exit layout



Proposed emergency exit layout

Proposed emergency exit layout for Target Steere Street Collie 15 August 2017 NTS
 Sheet 1 of 2