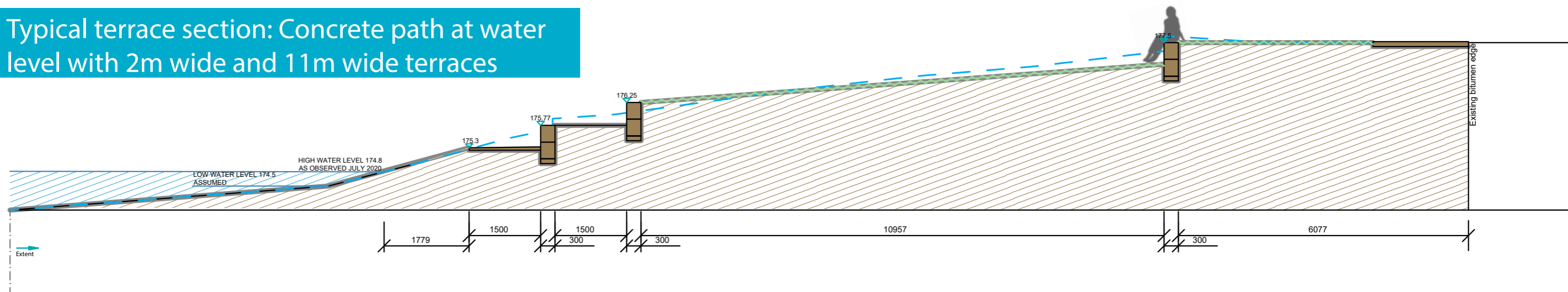


Minninup Pool: Indicative Details

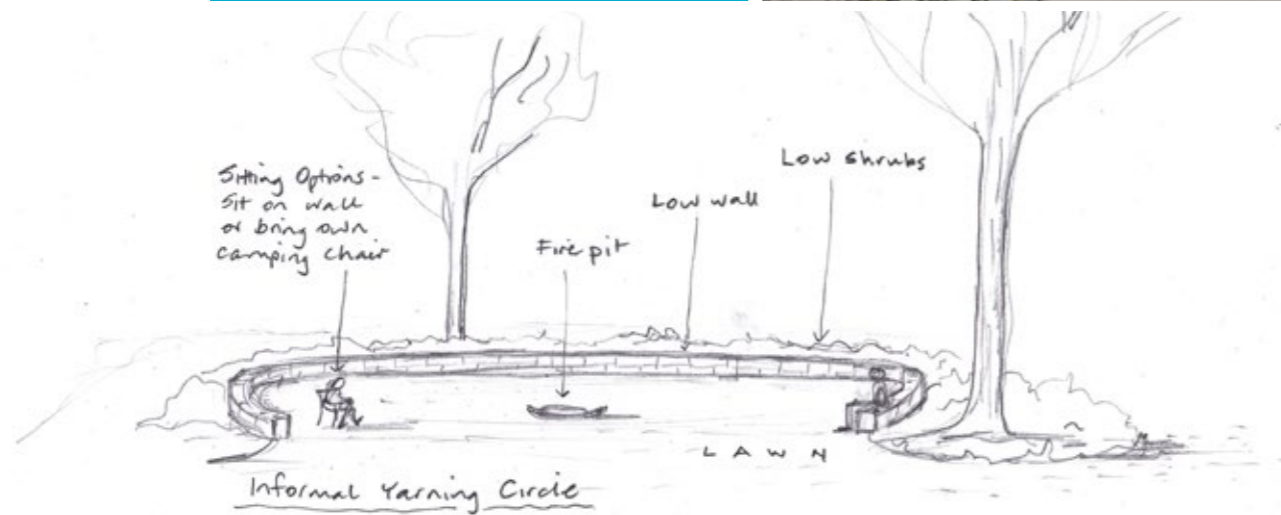
Examples: Concrete path at water level following the shoreline and wheelchair accessible path.



Typical terrace section: Concrete path at water level with 2m wide and 11m wide terraces



Typical parking detail. Indicative retaining wall, steps and central handrail.



Potential Yarning circle



Curved seating (potentially Waugal seat) and Indicative lookout

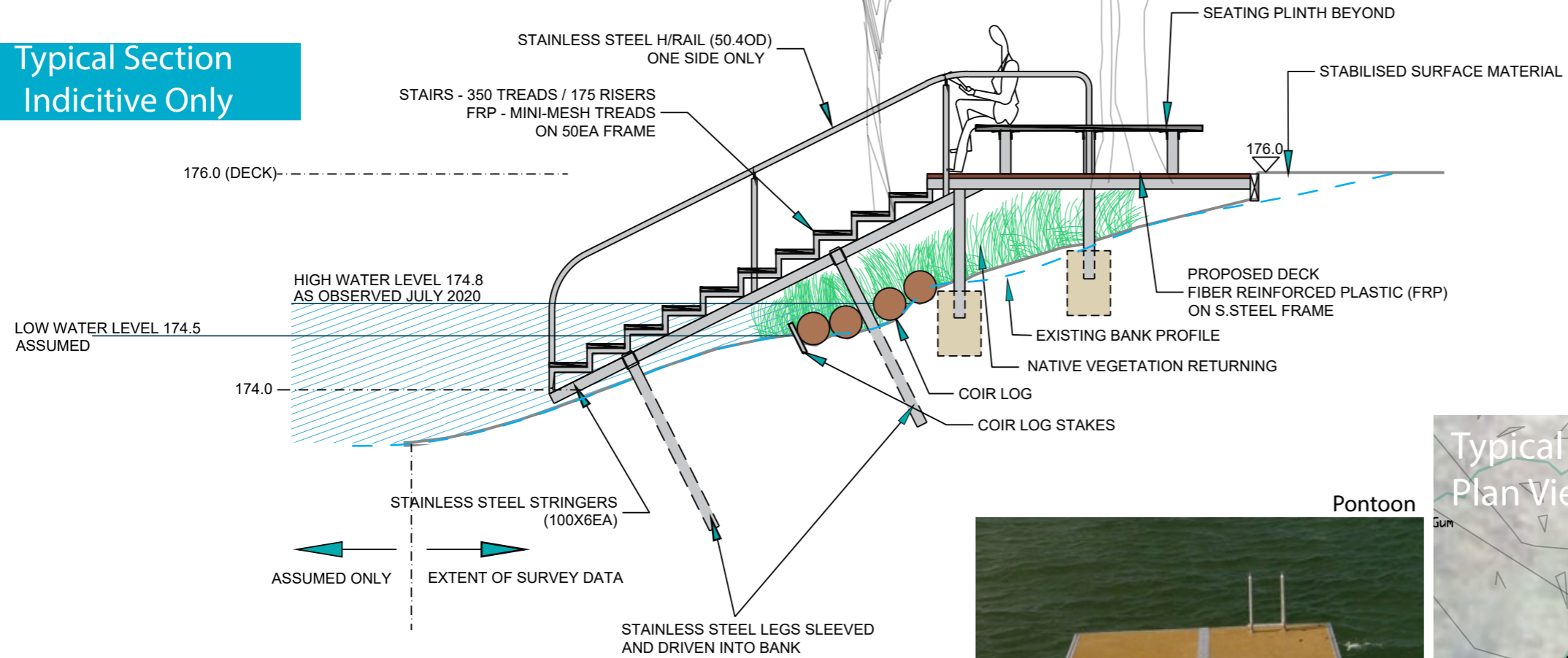


DRAFT ONLY FOR DISCUSSION

Minninup Pool: Indicative Swimming & Canoe Decks



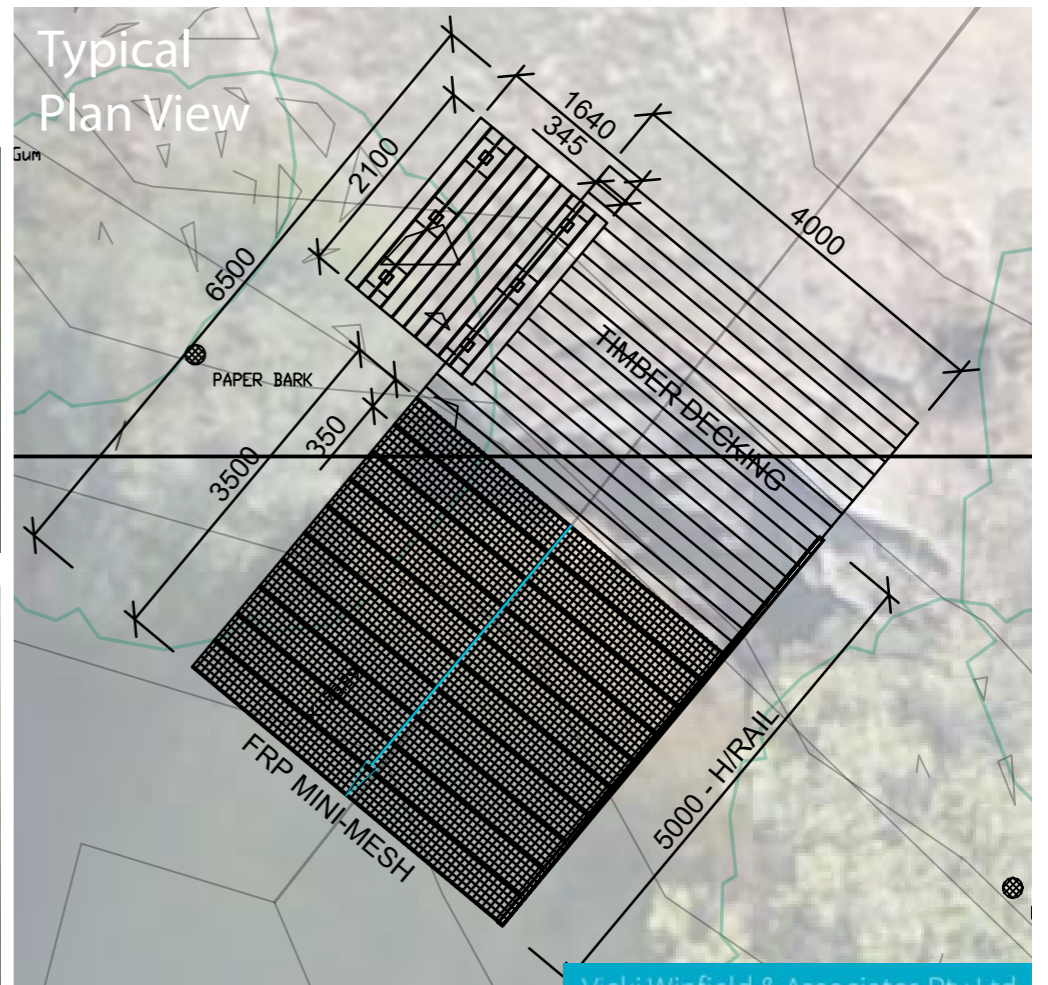
Typical Section Indicative Only



Warren National Park



Warren National Park



River Access Palette

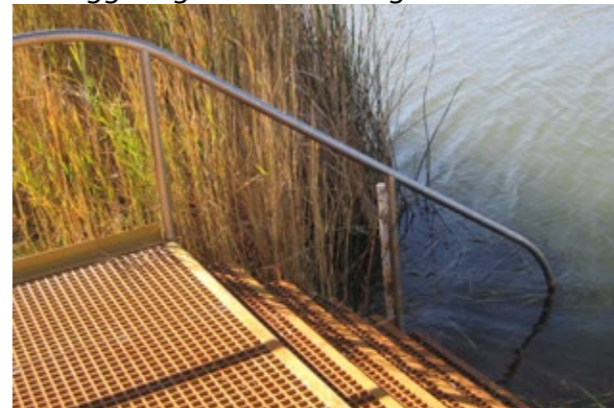
Nornalup floating canoe access



Nhangghangunha swimming deck



Nhangghangunha swimming deck

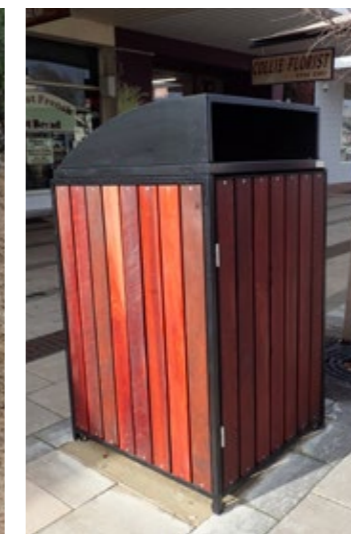


Pontoon



DRAFT ONLY FOR DISCUSSION

Minninup Pool: Indicative Structures, Furniture & Planting



DRAFT ONLY FOR DISCUSSION

Minninup: Interpretation

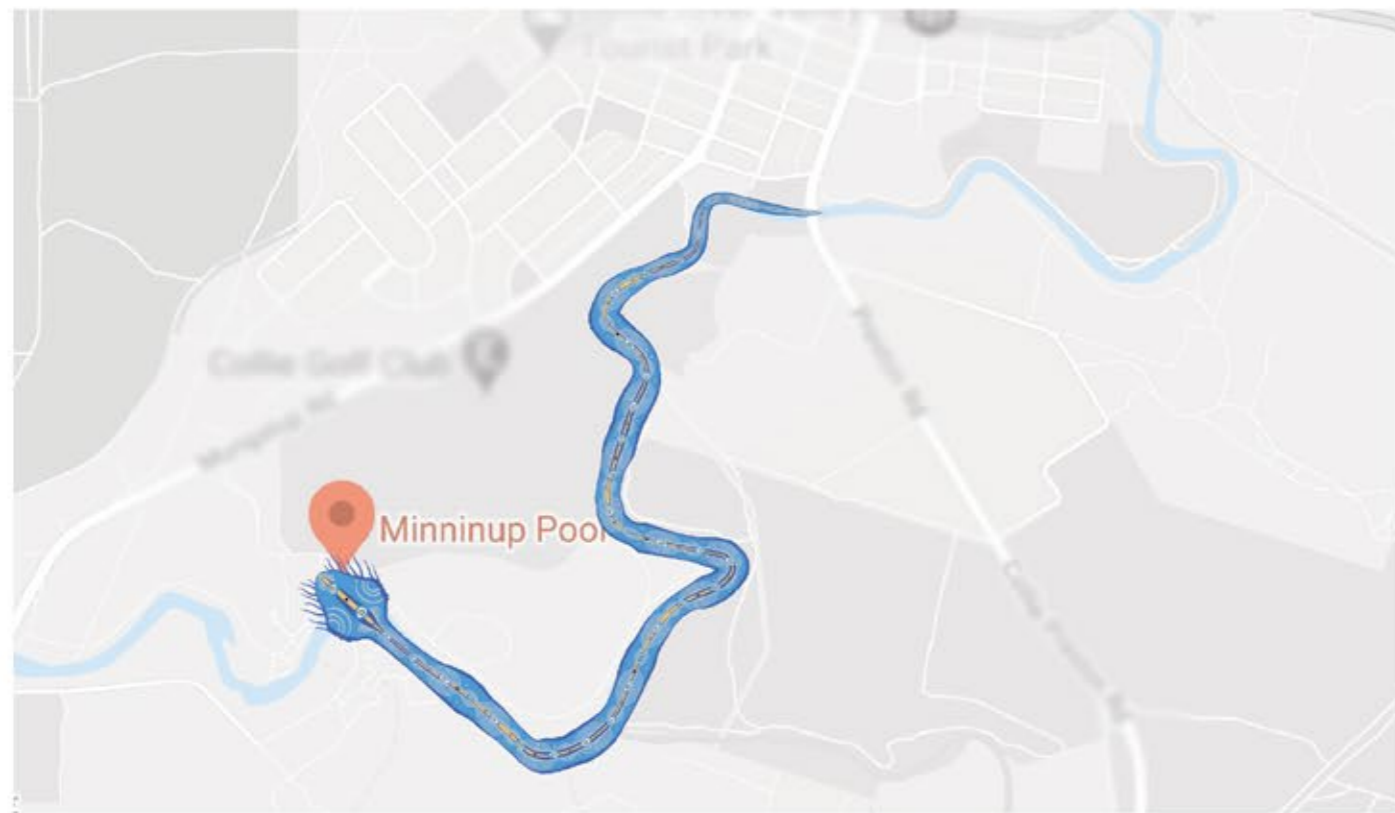
Interpretation is the name we give to information and storytelling about a place, or the special meaning it has to people.

- It can increase visitor awareness and understanding of what is special about Minninup
- It can increase visitor enjoyment by guiding visitors to activities, or helping them identify plants, birds and animals
- It can guide visitors behaviour to minimise visitor impacts
- And it can generate community support for the project.

We try and use graphic art and interesting materials to build a theme throughout the whole site.

Waugal Shape

The waugal shape comes from the Collie River with the head resting at Minninup Pool.



We like to have a visual theme that recurs throughout the interpretation.

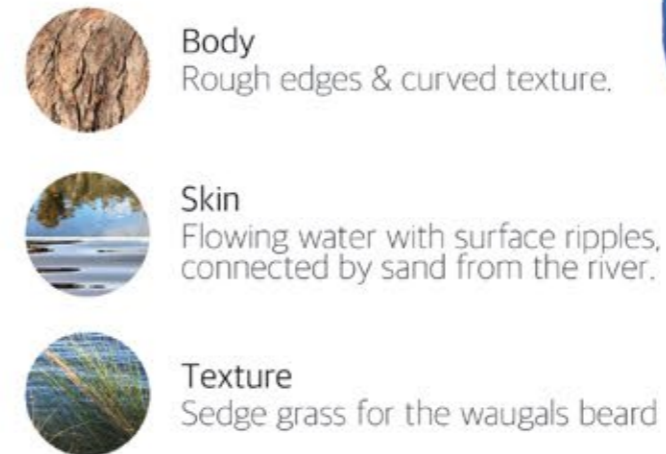
Our idea for this project is a - Waugal, shape of Collie river through town ending at Minninup Pool



Waugal Colours



Waugal Style



DRAFT ONLY FOR DISCUSSION

Vicki Winfield & Associates Pty Ltd

PO Box 814 Manjimup WA 6258
P: 0448 111 100 E: vicki.winfield@bigpond.com

Minninup Interpretation: Examples from other places & Suggested Topics



Main Welcome sign at picnic area

Welcome to Minninup Pool – a sacred place for Kaniyang Wilman people Here we tell the story of the bearded Waugal.

Reverse side Site Orientation map and district map.



**Other panels:
Low horizontal
inclined 800x400
panels**



In main picnic area: **two panels**

maybe bird ID, and feral ducks – don't feed them?

Near lookout or old diving board steps area: **one panel**

maybe Sea-eagle story, or water gives fire story? Others?

Sandy Beach: **one panel**

Noongar food from the river? Yangit reeds, mussels, fish?

Near old rowing club: **two panels**

Rowing club story - popular spot for recreation, historic photos, racecourse?

Walk trail with ten trail-side panels (400x300 inclined) Showing Noongar life, use of plants and animals etc.

DRAFT ONLY FOR DISCUSSION

Minninup: Additional Opportunities

QR Codes & Technology

There's an opportunity to further develop interpretation off-site through the use of mobile phones and QR codes that link to website content of remarkable depth and up to date accuracy.

Whadjuk Trail Network on Noongar land in the western suburbs of Perth uses QR Codes on its trails. When scanned, the **QR Code allows trail users to listen to Aboriginal stories and songs, and to learn additional information about the fauna and flora in the area.**



Waugul Entry Sculpture



Waugul Sculpture Park, Donybrook WA

DRAFT ONLY FOR DISCUSSION